



mailbox[®]
The Door to Door Distribution Company



Take your business
to the next level!

15

Distributing
your company's
message for the
last 15 years

YEARS
ANNIVERSARY





The Company

As a company, we offer various direct marketing services to meet client requirements. Specialising directly in door-to-door distribution services, we strongly believe that this medium is the optimum service ensuring high penetration. It is characterised by its flexibility and effectiveness to reach a desired market segment. Our dedicated staff at Mailbox makes sure that the service rendered is the most cost effective way of making your customers aware of any offers and messages to be related. For the past years, we have always succeeded in attracting a wide range of customers from various business sections and that is why we strive further.

Mission Statement

Our mission is to constantly increase our presence in the market within which we operate in order to deserve the status as market leaders. Our vision is based upon high ethical standards, quality and customer satisfaction. The provision of an honest customer-focused service of the highest quality standards is the founding pillar of our group. Mailbox is fully committed to providing total quality solutions at optimal prices to the business community in order to solidly support its customers in their endeavours to succeed providing high quality, cost-effective services. Professionalism and Dedication has allowed Mailbox to gain the trust of many leading organisations in Malta.

Why choose us?

- 1 TOTAL ADAPTABILITY**

We do not deliver in extreme weather conditions. This means that your leaflets do not get wet and unusable.
- 2 SAFE & DRY STORES**

While your leaflets are waiting for distribution they are stored on our premises in a safe and dry environment.
- 3 TRAINED EMPLOYEES**

Our employees receive ongoing training on how to correctly deliver your marketing material. This training is reviewed yearly.
- 4 CORPORATE RESPONSIBILITY**

We use professional and reliable adult employees so you can have confidence in the distribution of your advertising material.
- 5 NO JUNKMAIL**

Mailbox Distribution respects the rights and privacies of residents. Any letterbox displaying a "NO JUNK MAIL" sign will not be delivered to.
- 6 GPS TRACKING SERVICE**

Our Staff are GPS tracked using the latest technology to ensure your material arrives on time and to the right areas without problems.
- 7 KEEPING YOU POSTED**

We provide daily updates, distribution schedules and fully detailed reports, complete with explanations during and after completion of each distribution campaign.

Why D2D distribution?



FACILITATES RESPONSES

Responding to mailings is easy for consumers. Mailings are often kept by consumers and can lead to responses months after delivery.



IMPACT

The impact value is very high. People have only one letterbox, they tend to notice door drops, pick them up and look at them.



EFFECTIVE

Research indicates that 48% of consumers have visited a shop, sent for information or have bought a product having received a door drop.



TARGETED

Geo-demographic and lifestyle targeting can be used to identify geographic areas which contain a high proportion of your target audience.



FLEXIBLE

There are very few limits to the format used.



COST EFFECTIVE

Door-to-door delivery is considerably cheaper than direct mail and provides an extremely cost effective way of delivering high information content.



USEFUL

While usefulness depends on the nature of the item being distributed, research indicates that 62-71% of consumers claim coupons, offers and samples are useful.



INFORMATIVE

Unlike most forms of advertising, a large amount of information can be conveyed to the target audience.



MEASUREABLE

A well executed door-to-door campaign produces measurable responses which advertisers can use to analyse how much business they generated for their budget.

Door-to-Door Distribution



Door-to-door Distribution is one of the most powerful and cost-effective direct marketing methods that can be used to advertise your products or services, promote special offers and build a strong brand. This marketing tool is ideal to communicate directly with your clients. Materials sent door-to-door are received at the comfort of one's own home and read at one's own free time, making it more likely for people to notice your message.

Door-to-door campaigns make an immediate impact and generate greater response, measured by an increase in sales leads and general enquiries; achieve cost-effective market coverage and allow you to target only specific areas that fit the demographic profile of your target audience. There are the following plans for distribution:



Shared Plan:

Have your flyer delivered with other items and share the distribution costs with other clients. Delivery within 10 working days (not including weekends).



Shared Plan - Express:

Ideal for last minute and urgent campaigns, delivery within 5 working days (not including weekends).



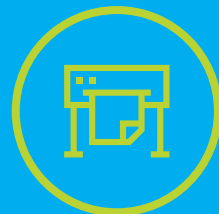
Solus Plan:

With this plan, your flyer is distributed on its own, therefore maximising the impact on your customers.



Business 2 Business Plan:

Sending your marketing materials to other businesses is a great alternative to physical networking as it is one of the most effective ways to communicate with other business prospects.



Printing and Production:

Mailbox strives to be a one-stop shop for direct marketing now also coordinating services for design and printing. These services are only outsourced to the best service providers ensuring excellent quality and customer satisfaction.



Locality by zones

Latest updated September 2018

ZONE 1

SOUTH EASTERN DISTRICT

	HOUSEHOLDS	BUSINESSES	TOTAL
Birzebbugia/Qajjenza	3672	242	3913
Ghaxaq	2121	130	2251
Gudja	1314	56	1369
Kirkop	882	36	918
Marsascala	5444	197	5642
Marsaxlokk	1405	85	1490
Mqabba	1268	86	1355
Qrendi	1155	69	1224
Safi	830	72	902
Zejtun	4437	408	4846
Zurrieq	3940	269	4208
Totals	26,467	1,651	28,118

ZONE 2

SOUTH HARBOUR DISTRICT

	HOUSEHOLDS	BUSINESSES	TOTAL
Cospicua	1999	72	2072
Fgura	4568	407	4975
Kalkara	1050	37	1087
Marsa	1792	372	2164
Paola	3633	527	4160
Senglea	1124	29	1153
St. Lucia	1331	37	1368
Tarxien	3449	188	3637
Valetta	3044	1432	4476
Vittoriosa	1050	47	1097
Xghajra	662	13	674
Zabbar	5621	345	5966
Totals	29,322	3,507	32,829

ZONE 3

NORTHERN HARBOUR DISTRICT

	HOUSEHOLDS	BUSINESSES	TOTAL
Birkirkara	9286	1238	10524
Floriana	977	292	1268
Gharghur	1412	42	1454
Gzira	3324	578	3902
Hamrun	4243	743	4986
Madliena	824	3	827
Msida	3606	494	4099
Pembroke	1418	23	1441
Pieta/Gwardamangia	1794	221	2015
Qormi	6410	240	6651
San Gwann/Kappara	5242	429	5671
Sliema	8231	1134	9365
St. Julians	4464	650	5114
St. Venera	3465	530	3995
Swieqi/lbragg	3486	142	3628
Ta' Xbiex	923	280	1203
Totals	59,105	7,039	66,144

ZONE 4

WESTERN DISTRICT

	HOUSEHOLDS	BUSINESSES	TOTAL
Attard	4205	300	4506
Balzan	1785	163	1948
Dingli	1208	84	1292
Iklin	1155	80	1235
Lija	1161	38	1199
Luqa	1989	342	2331
Mtarfa	733	39	772
Rabat/Virtu/Mdina/ Bahrija	4669	574	5243
Siggiewi	2948	89	3038
Zebbug	4515	740	5255
Totals	24,368	2,450	26,818

ZONE 5

NORTHERN DISTRICT

	HOUSEHOLDS	BUSINESSES	TOTAL
Bahar ic-Caghaq/ Maghtab/Salina	1033	22	1055
Burmarrad/Wardija	783	44	827
Mellieha/Ghadira/ Manikata	5623	247	5870
Mgarr/Zebbiegh	1838	68	1906
Mosta/Bidnija	7866	767	8633
Naxxar	4836	267	5103
St. Paul's Bay/ Xemxija/Qawra/ Bugibba	10127	1099	11227
Totals	32,106	2,514	34,620

ZONE 6

GOZO DISTRICT

	HOUSEHOLDS	BUSINESSES	TOTAL
Victoria/Fontana	1131	152	1283
Nadur	1370	236	1607
Xaghra	994	151	1146
Xewkija	2081	118	2199
Qala	1082	48	1130
Ghajnsielem	1278	185	1463
Zebbug/Marsalforn	3451	778	4229
Sannat/Munxar/ Xlendi	1965	92	2057
Kercem/St. Lucija	1594	176	1770
Gharb/San Lawrenz/ Ghasri	1376	243	1618
Totals	16,321	2,180	18,501

Locality figures

MALTA

	HOUSEHOLDS	BUSINESSES	TOTAL
Attard	4205	300	4506
Bahar ic-Caghaq/Maghtab/Salina	1033	22	1055
Balzan	1785	163	1948
Birkirkara	9286	1238	10524
Birzebugia/Qajjenza	3672	242	3913
Burmarrad/Wardija	783	44	827
Cospicua	1999	72	2072
Dingli	1208	84	1292
Fgura	4568	407	4975
Floriana	977	292	1268
Charghur	1412	42	1454
Chaxaq	2121	130	2251
Gudja	1314	56	1369
Gzira	3324	578	3902
Hamrun	4243	743	4986
Iklin	1155	80	1235
Kalkara	1050	37	1087
Kirkop	882	36	918
Lija	1161	38	1199
Luqa	1989	342	2331
Madliena	824	3	827
Marsa	1792	372	2164
Marsascula	5444	197	5642
Marsaxlokk	1405	85	1490
Mellieha/Ghadira/Manikata	5623	247	5870
Mgarr/Zebbiegh	1838	68	1906
Mosta/Bidnija	7866	767	8633
Mqabba	1268	86	1355
Msida	3606	494	4099
Mtarfa	733	39	772
Naxxar	4836	267	5103
Paola	3633	527	4160
Pembroke	1418	23	1441
Pieta/Gwardamangia	1794	221	2015

Qormi	6410	240	6651
Qrendi	1155	69	1224
Rabat/Virtu/Mdina/Bahrija	4669	574	5243
Safi	830	72	902
San Gwann/Kappara	5242	429	5671
St. Lucia	1124	29	1153
Senglea	1331	37	1368
Siggiewi	2948	89	3038
Sliema	8231	1134	9365
St. Julians	4464	650	5114
St. Paul's Bay/Xemxija/Qawra/Bugibba	10127	1099	11227
St. Venera	3465	530	3995
Swieqi/Ibragg	3486	142	3628
Ta' Xbiex	923	280	1203
Tarxien	3449	188	3637
Valletta	3044	1432	4476
Vittoriosa	1050	47	1097
Xghajra	662	13	674
Zabbar	5621	345	5966
Zebbug	4515	740	5255
Zejtun	4437	408	4846
Zurrieq	3940	269	4208
Totals	171,368	17,160	188,528

GOZO

	HOUSEHOLDS	BUSINESSES	TOTAL
Chajnsielem	1131	152	1283
Charb/San Lawrenz/Ghasri	1370	236	1607
Kercem/St. Lucija	994	151	1146
Nadur	2081	118	2199
Qala	1082	48	1130
Sannat/Munxar/Xlendi	1278	185	1463
Victoria/Fontana	3451	778	4229
Xaghra	1965	92	2057
Xewkija	1594	176	1770
Zebbug/Marsalforn	1376	243	1618
Totals	16,321	2,180	1,618
Grand Totals	187,689	19,340	190,146

DISCLAIMER: The above occupied households and business figures represent the quantities necessary to cover the core urban areas of the said localities in a door to door unaddressed distribution. These figures represent the latest and up to date quantities following a recent survey conducted and bear no relation to official properties, electoral registers, or any other official estimates, but have been collected on the basis and for the sole purposes of such distributions. All figures and data are being supplied for information purposes only and remain the sole property of Mailbox Distribution Services. Their use, copying, reproduction, publishing or broadcasting is strictly prohibited without prior written consent from an authorized representative of Mailbox Distribution Services. 2018 © Mailbox Distribution Services. All rights reserved.



Mailbox, the leading door-to-door leaflet delivery and magazine distribution company in Malta



Some of our satisfied clients



Contact us to get your message across

39, Kurat Schembri Street,
Mosta MST 1176 MALTA

(+356) 2142 2561
(+356) 9997 0284

info@mailbox.com.mt



www.mailbox.com.mt

This document is for informational purposes only, and Mailbox Distribution Services reserves the right to change any aspect of the products, features or functionality described in this document without prior notice. Please contact Mailbox Distribution Services for additional information and updates. 2016 © All rights reserved.